

# Big Ideas Grant (B.I.G.) 2.0

FREQUENTLY ASKED  
QUESTIONS

2024

FOUNDATION  
FOR BLACK  
COMMUNITIES



## 01 What is a B3 organization?

### **Black-Mandated organization:**

These organizations permanently and primarily serve Black communities, addressing issues and providing particularly relevant services to Black people. Their programs and initiatives are designed to address challenges that disproportionately affect Black communities.

### **Black-led organization:**

These organizations are led and governed primarily by Black individuals. At least 2/3 of their leadership, including their executive team and board of directors, are Black. Leadership here implies that decisions, policies, and strategic direction reflect the lived experiences and priorities of Black people.

### **Black-serving organization:**

These organizations services, supports, and resources are designed and dedicated to supporting Black communities, ensuring that their services and programs meet the needs of Black individuals, even if their service beneficiaries include other groups.

## 02 We're not sure if our organization would be considered completely B3. What if our organization is only 1 or 2 parts of the B3 requirement? Would that mean we are ineligible?

The purpose of FFBC funding is to support Black-led organizations intentionally working with Black communities in Canada. We will review each organization and application to assess the degree to which a program and/or organization aligns with that purpose. All applicants are required to explain how their organization is Black-mandated and how their work intentionally impacts Black communities in Canada.

---

### 03 Can I use these funds for projects outside of Canada?

No, only organizations and initiatives based in Canada are eligible for funding.

---

### 04 Can I use these funds for projects in more than one province of Canada?

Yes, these funds can be used for projects that operate in multiple provinces. When applying, please select the province where your project will have the most significant impact, such as where most interventions or beneficiaries are located. Ensure your application clearly outlines how the project will benefit Black communities across all provinces where it will be implemented.

---

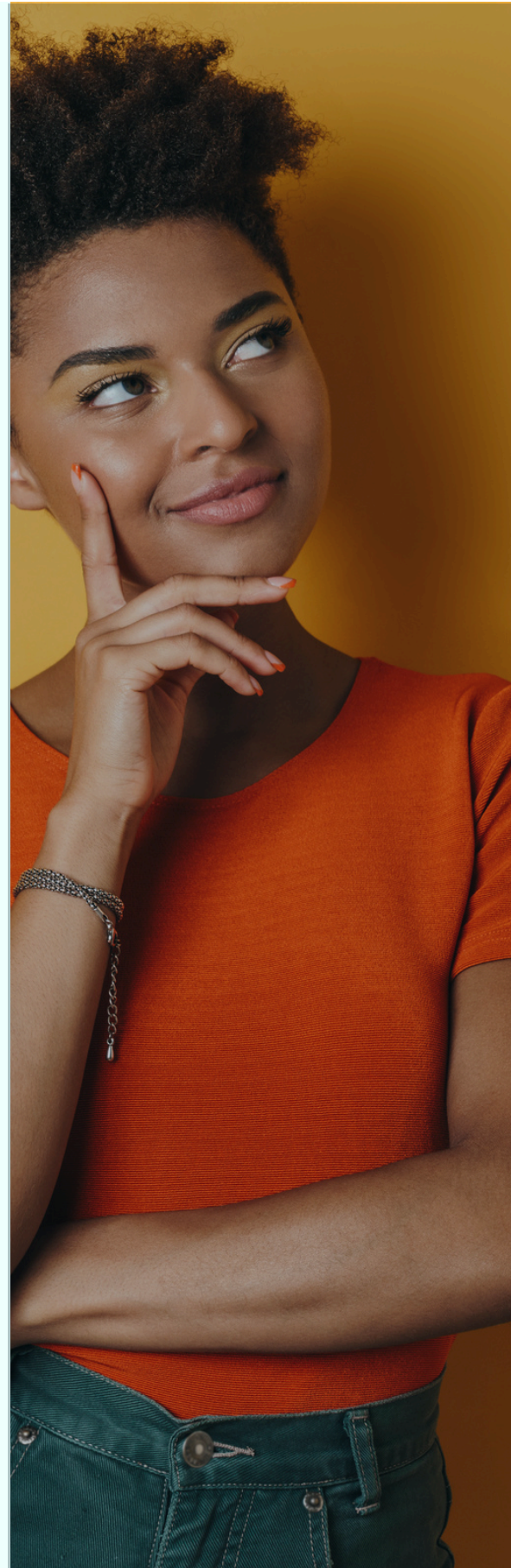
### 05 What is an incorporated partner?

Unincorporated groups require an incorporated non-profit or charitable organization as an Incorporated Partner to receive FFBC funding. It is necessary to have an Incorporated Partner before starting your application.

Please note, that FFBC will support applicants with access to further information and resources about working with Incorporated Partners but will not be responsible for finding or securing an Incorporated Partner for applicants.

More information can be found here:

1. [Managing an organization](#), Imagine Canada
2. [Charities and giving](#), Government of Canada





**06 What does an Incorporated Partner do? Do we need one to start the application process?**

An Incorporated Partner will serve as the legal entity that will be in receipt of FFBC dollars and file the required tax forms to account for the dollars. The Incorporated Partner might provide additional support as agreed upon by the FFBC applicant and Incorporated Partner. For this round of funding, unincorporated groups must have an incorporated partner before they start their application.

**07 Does our Incorporated Partner have to be a B3 organization?**

We recognize that finding a B3 Incorporated Partner may be a barrier to funding; however, for this round of funding, your incorporated partner must be a B3 organization.

**08 Can our Incorporated Partner be a business?**

No. An Incorporated Partner is a not-for-profit or charitable organization.

**09 Can I apply for more than one stream?**

No. Applicants are required to apply for only one stream.

## 10 How much funding is available?

Applicants are invited to apply to one of the following three streams:

- Core Stream, for funding up to \$30,000 to address core and operational needs, unrelated to programming;
- Catapult Stream, for funding up to \$80,000 to invest in new or to expand the existing programs and services, and;
- Community Spaces Stream, for funding up to \$200,000 to invest in capital projects and social infrastructure.



## 11 How do I access the application portal?

You can access the application using this [link](#). We recommend that you first review application questions available [here](#), before starting your application.

## 12 If I (or any of our team members) have applied to sit on the Community Selection Circles, does that mean our grant application will not be accepted?

No. Your application will be accepted and please keep in mind you or your colleague will not review your own grant application.

## 13 What if I need more information about B.I.G. 2.0, 2024?

You can register for the information sessions for the following dates:

- [Webinar in English](#): October 8, 2024, at 3:00pm ET
- [Webinar in French](#): October 9, 2024, at 3:00pm ET

---

**14 Do you allow for oral submissions for organizations / groups that require assistance?**

Yes, we are offering limited spots for applicants to submit an oral application if needed. Booking oral applications will be available between October 28th and November 8th, 2024.

To book a meeting for your oral application, click [here](#).

**15 We received funding from FFBC through the Black Ideas Grant: Bridge and Build 2023, can we still apply for the Black Ideas Grant 2.0, 2024?**

No. If you received funding from Black Ideas Grant (B.I.G.) in 2023-2024, you are not eligible to apply for this year's grant.

**16 I applied for the Supporting Black Canadian Communities Initiative (SBCCI); can we still apply for the FFBC funding.**

Yes. Please be aware that although you may still apply for B.I.G. 2.0, 2024, if you received funding from SBCCI, you will not be able to fund the same initiative/project.

**17 When will decisions be made by the Community Selection Circles?**

Final decisions will be made and communicated before the end of February 2025.



## 18 Can religious organizations apply?

Yes, religious organizations can apply. However, activities that are religious or include a requirement to participate in any dimensions of faith are not eligible.

*Ex. A church running a community-based kitchen can apply for supplies and staffing costs.*

## 19 If I have a question about my application, who should I contact?

If you have a question or concern with your application, please send us an email at [grants@forblackcommunities.org](mailto:grants@forblackcommunities.org) or book a coaching call [here](#).



---

# Black Ideas Grant 2.0: Fund Glossary

FFBC's grant-making takes a community-informed, iterative, and learning-focused approach. The definitions below are meant to provide further context for understanding these concepts rather than immutable definitions.

## **Black-Mandated organization:**

These organizations permanently and primarily serve Black communities, addressing issues and providing particularly relevant services to Black people. Their programs and initiatives are designed to address challenges that disproportionately affect Black communities.

## **Black-led organization:**

These organizations are led and governed primarily by Black individuals. At least 2/3 of their leadership, including their executive team and board of directors, are Black. Leadership here implies that decisions, policies, and strategic direction reflect the lived experiences and priorities of Black people.

## **Black-serving organization:**

These organizations services, supports, and resources are designed and dedicated to supporting Black communities, ensuring that their services and programs meet the needs of Black individuals, even if their service beneficiaries include other groups.





---

### **Collaborative Agreement:**

The written agreement, detailing the purpose and nature of the collaborative, including roles and responsibilities, purpose of the collaborative, working arrangements that include decision-making and conflict resolution. The agreement is signed by all members of the collaborative making application for FFBC funding.

### **Political Activity:**

Activities carried out to support or oppose any political party, elected representative, or candidate for public office.

### **Participatory Grant making model:**

The community involvement is central to FFBC's participatory grant making process. Our approach is based on the idea that we are interconnected, and we can improve the conditions for ourselves by improving the conditions for those around us.

With the multi-tiered decision-making process we have, Community Selection Circles (CSC) are crucial as they perform the initial application assessments and recommend grantees to the other levels all the way to the FFBC Board. CSC members are selected from the wider Black community members.



### **Sustainable Development Goals:**

The Sustainable Goals are 17 urgent calls to action designed and built by the United Nations Member States. More information can be found here: <https://sdgs.un.org/goals>

### **Social Determinants of Health:**

According to the World Health Organization, social determinants of health are “are the non-medical factors that influence health outcomes.” More information can be found here: [https://www.who.int/health-topics/social-determinants-of-health#tab=tab\\_1](https://www.who.int/health-topics/social-determinants-of-health#tab=tab_1)